

RESEARCH ARTICLE

Open Access

Wasting among Uganda men with pulmonary tuberculosis is associated with linear regain in lean tissue mass during and after treatment in contrast to women with wasting who regain fat tissue mass: prospective cohort study

Ezekiel Mupere^{1,3*}, LaShaunda Malone², Sarah Zalwango³, Alphonse Okwera³, Mary Nsereko³, Daniel J Tisch⁴, Isabel M Parraga⁵, Catherine M Stein^{2,4}, Roy Mugerwa^{3,6}, W Henry Boom², Harriet K Mayanja^{3,6}, Christopher C Whalen⁷ and Tuberculosis Research Unit at Case Western Reserve University

Abstract

Background: Nutritional changes during and after tuberculosis treatment have not been well described. We therefore determined the effect of wasting on rate of mean change in lean tissue and fat mass as measured by bioelectrical impedance analysis (BIA), and mean change in body mass index (BMI) during and after tuberculosis treatment.

Methods: In a prospective cohort study of 717 adult patients, BMI and height-normalized indices of lean tissue (LMI) and fat mass (FMI) as measured by BIA were assessed at baseline, 3, 12, and 24 months.

Results: Men with wasting at baseline regained LMI at a greater rate than FMI (4.55 kg/m² (95% confidence interval (CI): 1.26, 7.83 versus 3.16 (95% CI: 0.80, 5.52)) per month, respectively during initial tuberculosis therapy. In contrast, women with wasting regained FMI at greater rate than LMI (3.55 kg/m² (95% CI: 0.40, 6.70) versus 2.07 (95% CI: -0.74, 4.88)), respectively. Men with wasting regained BMI at a rate of 6.45 kg/m² (95% CI: 3.02, 9.87) in the first three months whereas women, had a rate of 3.30 kg/m² (95% CI: -0.11, 6.72). There were minimal changes in body composition after month 3 and during months 12 to 24.

Conclusion: Wasted tuberculosis patients regain weight with treatment but the type of gain differs by gender and patients may remain underweight after the initial phase of treatment.

Keywords: Tuberculosis, HIV, Wasting, Lean tissue mass index, Fat mass index, Body mass index, Gender

Background

A cardinal feature of tuberculosis patients is marked wasting at time of disease diagnosis [1-3]. Wasting associated with tuberculosis is likely caused by a combination of decreased appetite and altered metabolism resulting from inflammatory and immune responses [4-6]. Decreased appetite compounds the increased metabolic demands

of the chronic inflammation associated with tuberculosis. Although antituberculosis treatment is highly effective [7], many patients remain underweight after 6 months of treatment [8] suggesting that full recovery takes longer than drug treatment itself.

In patients with both tuberculosis and HIV co-infection, wasting may be exacerbated [6,9]. Findings from some cross-sectional studies show no large differences in body composition between HIV sero-positive and sero-negative adults with tuberculosis at presentation [10-13] although gender may be a confounding factor [1,12].

* Correspondence: muperez@yahoo.com

¹Department of Paediatrics & Child Health College of Health Sciences, Makerere University Kampala, Kampala, Uganda

³Uganda-Case Western Reserve Research Collaboration, Kampala, Uganda
Full list of author information is available at the end of the article

Although several reports have described the nutritional changes at the time of tuberculosis diagnosis using both anthropometry and bioelectrical impedance analysis (BIA) [4,10,12,14-16], follow-up studies to explain nutritional changes during and after tuberculosis treatment are limited. Yet such information would provide the basis for designing nutritional interventions to rescue the wasting associated with tuberculosis.

Previous studies [1,17] found weight gain to be a poor indicator of clinical response in tuberculosis. Moreover, weight or body mass index (BMI) provides limited information about nutritional alterations in a patient. Measurement of body composition is necessary to obtain a better picture of the nutritional status in tuberculosis because body compartments differ in their contribution to weight gain and to clinical benefit. Lean tissue mass and fat mass as body composition measurements have been shown to permit a more precise evaluation of nutritional status [18,19]. Lean tissue mass is more closely correlated with quality of life, physical functioning and survival than are fat mass and body weight [20-22]. BIA is a useful non-invasive and cost-effective method for clinical assessment of lean tissue and fat mass despite its limitations [23,24]. In this large retrospective study, we have demonstrated the effect of baseline wasting and HIV infection on rate of change in lean tissue mass, fat mass, and BMI during and after treatment among tuberculosis patients in urban Uganda, Kampala.

Methods

Study design

We conducted a prospective cohort study of 745 adults (age ≥ 18 years) with initial episode pulmonary tuberculosis, defined baseline body wasting and confirmed HIV status. The data were generated from subjects enrolled in the Household Contact study [25-27] and in the placebo arm of a randomized placebo-controlled clinical trial that used prednisolone as an adjunct treatment among HIV patients with tuberculosis [28]. Data for the intervention arm of this trial was not used in the present study because prednisolone has adverse nutritional effects.

The institutional review boards at Case Western Reserve University in the United States and Joint Clinical Research Center in Uganda reviewed the protocol and final approval was obtained from the Uganda National Council for Science and Technology. All participants provided written informed consent for enrollment into the study and were given appropriate pre- and post-test HIV counseling and AIDS education.

At enrollment, basic demographic information and medical history were collected by self report, and a standardized physical examination was conducted by a medical officer. Active tuberculosis was confirmed by sputum smear microscopy and culture. Patients with active tuberculosis

were treated with standard four-drug chemotherapy for tuberculosis in accordance with the Ugandan Ministry of Health guidelines. HIV-1 infection was diagnosed on the basis of a positive enzyme-linked immunosorbent assay for HIV-1 antibodies (Recombigen; Cambridge Biotech, Cambridge, MA). BMI was available at baseline and follow-up for all subjects whereas BIA baseline and follow-up data were available for only a subset of 278 participants from the household contact study.

Nutritional status was assessed using anthropometric measurements (height and weight) and BIA (RJL Systems, Quantum II, Detroit, MI). Weight was determined to the nearest 0.1 kg using a SECA adult balance scale, and standing height was determined to the nearest centimeter. Anthropometric and BIA measurements were performed on the day patients were confirmed to have tuberculosis disease and at scheduled visits including baseline, 3, 12, and 24 months on follow-up using the same equipment and standard conditions [23]. Body-mass index (BMI) was computed using the relationship of weight in kilograms divided by height in meters squared (kg/m^2).

Single-frequency BIA was performed at 50 kHz and 800 mA with standard tetrapolar lead placement [29]. Before performing measurements, the BIA instrument was calibrated using the manufacturer's recalibration device. The resistance and reactance were based on measures of a series circuit [30]. BIA measurements were performed in triplicate for each subject after resting the participant for a minimum of 2 hours, having voided their bladder, no alcohol intake in previous 24 hours and at ambient temperature. Average measurements were used in the analysis. Lean tissue mass was calculated from BIA measurements using equations that were previously cross-validated in a sample of patients (white, black and Hispanic) with and without HIV infection [30] and have been applied elsewhere in African studies [10,15,16]. Fat mass was calculated as body weight minus lean tissue mass.

We used BMI and height-normalized indices (adjusted for height²) of body composition that partition BMI into lean tissue mass index (LMI) and fat mass index (FMI) [18,19,31] to establish the body wasting status of participants. The LMI and FMI have the advantages of compensating for differences in height and age [24]. Also, use of LMI and FMI eliminates some of the differences between population groups. We defined body wasting as patients having low LMI ($<16.7 \text{ kg}/\text{m}^2$ for men and $<14.6 \text{ kg}/\text{m}^2$ for women) and low FMI ($<1.8 \text{ kg}/\text{m}^2$ for men and $<3.9 \text{ kg}/\text{m}^2$ for women) [19] corresponding to WHO BMI categories ($<18.5 \text{ kg}/\text{m}^2$) for malnutrition among adults as previously reported [32].

Statistical analysis

The main aim of the analysis was to examine the change in body composition during and after tuberculosis

treatment as measured by LMI, FMI, and BMI; and to relate these changes to baseline wasting. Based on our previous findings [12,22], we hypothesized that rate of change in LMI, FMI, and BMI would differ in patients with or without baseline wasting and it would also differ by sex.

The main outcome vectors of the participant's LMI, FMI, and BMI were modeled as linear combinations of baseline covariates and baseline wasting status in separate multilevel linear random mixed models with random intercept and random slope, accounting for correlation of repeated measurements within each individual [33-35]. We used the full maximum likelihood estimation method for parameter estimation and type 3 F-test for testing significance. We assumed a spatial exponential covariance structure because the intervals between serial data points were different by design. Piecewise linear mixed models [36,37] were used to assess, for a given measure, the change in gradient over time at the knot for month 3 and at month 12. The knots in the piecewise were chosen a priori basing on the scheduled data point measurements. The main predictor was baseline wasting and the following were other covariates used to assess associations with the dependent variables overtime: HIV sero-status; anemia (hemoglobin ≤ 10 mg/dl); prior smoking status; history of weight loss; and extent of disease on chest x-ray categorized as normal/minimal and moderate/far advanced. The interval between study visits was adjusted to an annual scale to facilitate the interpretation of rates of LMI, FMI, and BMI decline per year.

Data missingness was assumed not to be informative on outcome variable and ignorable after performing separate generalizing estimating equations models for LM, FMI, and BMI using Proc GENMOD with a logit link function to assess the effect of having wasting versus no wasting at baseline on to probability of missing overtime [38]. To assess for the confounding effects of HIV and gender, we fitted stratified models according to HIV strata and gender. The analyses were performed using SAS MIXED procedures [39] and SAS version 9.1.3 Cary software, North Carolina SAS Institute Inc. 2004.

Results

Baseline characteristics of the study population

Of the 745 participants who were available, 28 were excluded due to lack of anthropometric follow-up data, leaving 717 participants in total for analysis. Of the 717 participants, 628 were from the household contact study and 89 from the placebo arm of the randomized controlled trial. The household contact and the placebo arm of the randomized controlled trial participants had comparable baseline characteristics including gender ($p = 0.109$), wasting as measured by BMI ($p = 0.286$), and proportion of anemic individuals (hemoglobin ≤ 10 mg/dl)

($p = 0.170$); however, differences were observed for current smoking status ($p = 0.020$), and extent of disease on chest radiography ($p = 0.004$). All the 717 participants had serial BMI measurements and 13% (92/717) of the 717 died on follow-up. A subset 278 from the household contact study of the 717 participants had LMI and FMI follow-up data for analysis. Of the 278 who had BIA data, 8% (22/278) died on follow-up. The 717 participants and the 278 subset of participants with BIA data had comparable baseline characteristics including wasting as measured by BMI ($p = 0.45$), gender ($p = 0.56$), proportion of anemic individuals (hemoglobin ≤ 10 mg/dl) ($p = 0.59$), current smoking status ($p = 0.95$), and extent of disease on chest radiography ($p = 0.13$).

Of the 717 patients who were included in the analysis, 293 (41%) were wasted as defined by BMI < 18.5 kg/m² at baseline (Table 1). Of the 278 participants with BIA baseline and follow-up data, 94 (34%) were wasted as measured by LMI. Of the 278 patients, 120 (43%) were wasted as measured by FMI (Table 1). There were gender differences in wasting status. Men had significantly greater reductions in LMI and BMI compared to women whereas women had significantly greater reductions in FMI compared to men (Table 1). There were no differences in wasting between HIV positive and HIV negative patients by any of the nutritional assessment measurements.

Impact of wasting and gender on rate of mean change in LMI during and after treatment

The effect of wasting as measured by LMI was associated with a significant gain in LMI at a rate of 2.68 (95% CI: 0.68, 4.67) kg/m² per month during the first three months of treatment after adjusting for HIV, status of anemia, prior smoking status, history of weight loss, and extent of disease on chest x-ray (Figure 1a; Additional file 1: Table S1 and Additional file 2: Table S2). Patients who presented with no wasting had gradual increase in LMI at a rate of 0.36 (95% CI: -1.38, 2.08) kg/m² per month. There were gradual changes in LMI after three months and after treatment regardless of wasting status at baseline (Figure 1a; Additional file 1: Table S1 and Additional file 2: Table S2). Patients who presented with wasting did not regain LMI to the same level as those who presented without wasting.

When we stratified to test for the confounding effects of gender and HIV on gain in LMI over time, men had a higher LMI at presentation than women. Men with wasting regained LMI at a greater rate of 4.55 (95% CI: 1.26, 7.83) kg/m² than women at 2.07 (95% CI: -0.74, 4.88) kg/m² per month during the first 3 months of treatment (Figure 1b and c; Additional file 1: Table S1 and Additional file 2: Table S2). A similar pattern was seen among patients without wasting at baseline (Figure 1b and c; Additional file 1: Table S1 and Additional file 2: Table S2).

Table 1 Baseline characteristics of tuberculosis patients with/or without baseline wasting in urban Uganda, Kampala

Characteristic	LMI		FMI		BMI	
	No wasting (n = 184)	Wasting (n = 94)	No wasting (n = 158)	Wasting (n = 120)	No wasting (n = 424)	Wasting (n = 293)
Age (years)						
≤30 (%)	122 (66)	54 (57)	99 (63)	77 (64)	252 (59)	170 (58)
>30 (%)	62 (34)	40 (43)	59 (37)	43 (36)	172 (41)	123 (42)
Sex						
Female (%)	115 (62)	19 (20) ^a	65 (41)	69 (58) ^b	232 (55)	115 (39) ^a
Male (%)	69 (38)	75 (80)	93 (59)	51 (42)	192 (45)	178 (61)
HIV-serostatus						
Negative (%)	105 (57)	53 (56)	90 (57)	68 (57)	198 (47)	140 (48)
Positive (%)	79 (43)	41 (44)	68 (43)	52 (43)	226 (53)	153 (52)
Hemoglobin (mg/dl) ¹						
>10 (%)	140 (76)	72 (77)	135 (85)	77 (64) ^a	208 (81)	118 (64) ^a
≤10 (%)	44 (24)	22 (23)	23 (15)	43 (36)	48 (19)	67 (36)
Smoker ²						
No (%)	159 (87)	56 (60) ^a	127 (80)	88 (74)	364 (86)	210 (72) ^a
Yes (%)	24 (13)	38 (40)	31 (20)	31 (26)	58 (14)	82 (28)
Takes alcohol ³						
No (%)	135 (74)	59 (63)	106 (67)	88 (74)	259 (61)	192 (66)
Yes (%)	48 (26)	35 (37)	52 (33)	31 (26)	164 (39)	101 (34)
Extent on chest x-ray ⁴						
Normal/minimal (%)	38 (21)	8 (9) ^b	26 (17)	20 (17)	74 (18)	33 (11) ^b
Moderate/far advanced (%)	143 (79)	86 (91)	131 (83)	98 (83)	346 (82)	257 (89)
Weight loss ⁵						
No (%)	32 (17)	12 (13)	31 (20)	13 (11)	107 (25)	52 (18) ^b
Yes (%)	151 (83)	82 (87)	126 (80)	107 (89)	315 (75)	240 (82)

^ap-value <0.001, ^bp-value <0.05; p-values obtained by chi-square test. BMI = body mass index, LMI = Lean tissue mass index, FMI = fat mass index. ¹276 missed hemoglobin measurement due to lack of blood for BMI data; ²three missed extent variable in BIA data and 7 in BMI data; ³one missed history of prior smoking in BIA data and 3 missed in BMI data; ⁴one missed history of alcohol intake for BMI and BIA data; ⁵one missed history of weight loss for BIA data and 3 missed in BMI data; LMI wasting (<16.7 kg/m² for men and <14.6 kg/m² for women, normal (≥ 16.7 kg/m² for men, ≥14.6 kg/m² for women); reduced BMI <18.5 kg/m².

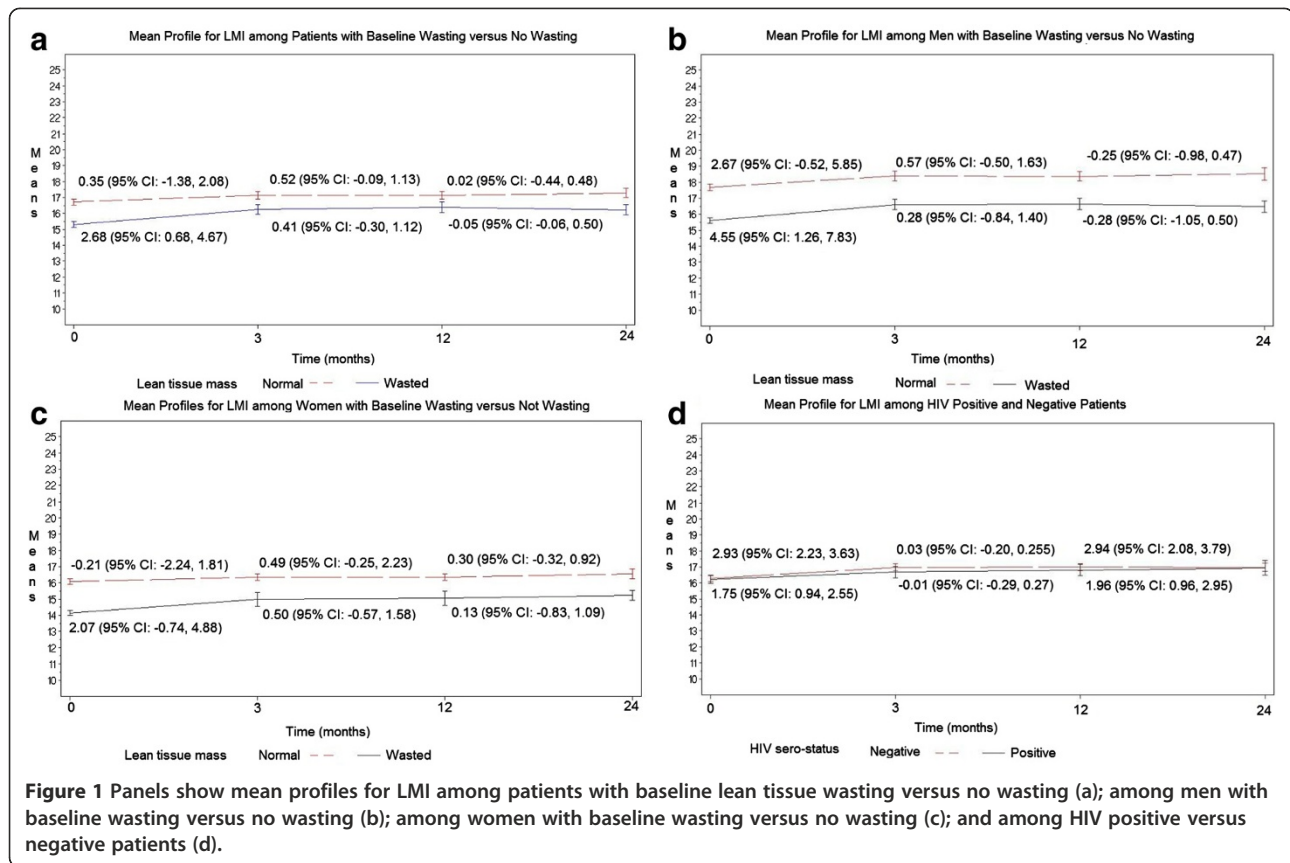
After the first 3 months of treatment, LMI gain was reduced in both men and women. Both HIV sero-positive and sero-negative patients regained LMI over first 3 months and after three months; however, there was comparable tendency for HIV sero-negative patients to regain at the same rate as HIV sero-positive patients (Figure 1d).

Impact of wasting and gender on rate of mean change in FMI during and after treatment

Patients regained FMI over time, up to 24 months regardless of baseline fat wasting as measured by low FMI; however, there was a tendency for patients with baseline fat wasting to gain FMI at higher rate compared to those with preserved fat tissue (Figure 2a; Additional file 1: Table S1 and Additional file 2: Table S2). During the first three months, patients who presented with wasting had a significant gain in FMI at rate of 2.23

(95% CI: 0.30, 4.16) kg/m² per month whereas patients who presented with normal fat mass had minimal change at a rate of -0.11 (95% CI: -1.98, 1.73) kg/m² per month after adjusting for HIV, prior smoking status, history of weight loss, and extent of disease on chest x-ray (Figure 2a; Additional file 1: Table S1 and Additional file 2: Table S2). There were minimal changes in FMI after month 3 and before month 12 among women and men regardless of initial fat mass wasting status.

During the first three months in stratified analysis (Figure 2b and c; Additional file 1: Table S1 and Additional file 2: Table S2), women had higher FMI at diagnosis than men. Among patients who presented with wasting, women gained more FMI at rate of 3.55 (95% CI: 0.40, 6.70) kg/m² per month compared to men at rate of 3.16 (95% CI: 0.80, 5.52). Regarding HIV status, there were minimal changes in FMI regardless of the initial fat mass level suggesting that both HIV sero-positive and



sero-negative patients regain FMI at similar rates (Figure 2d).

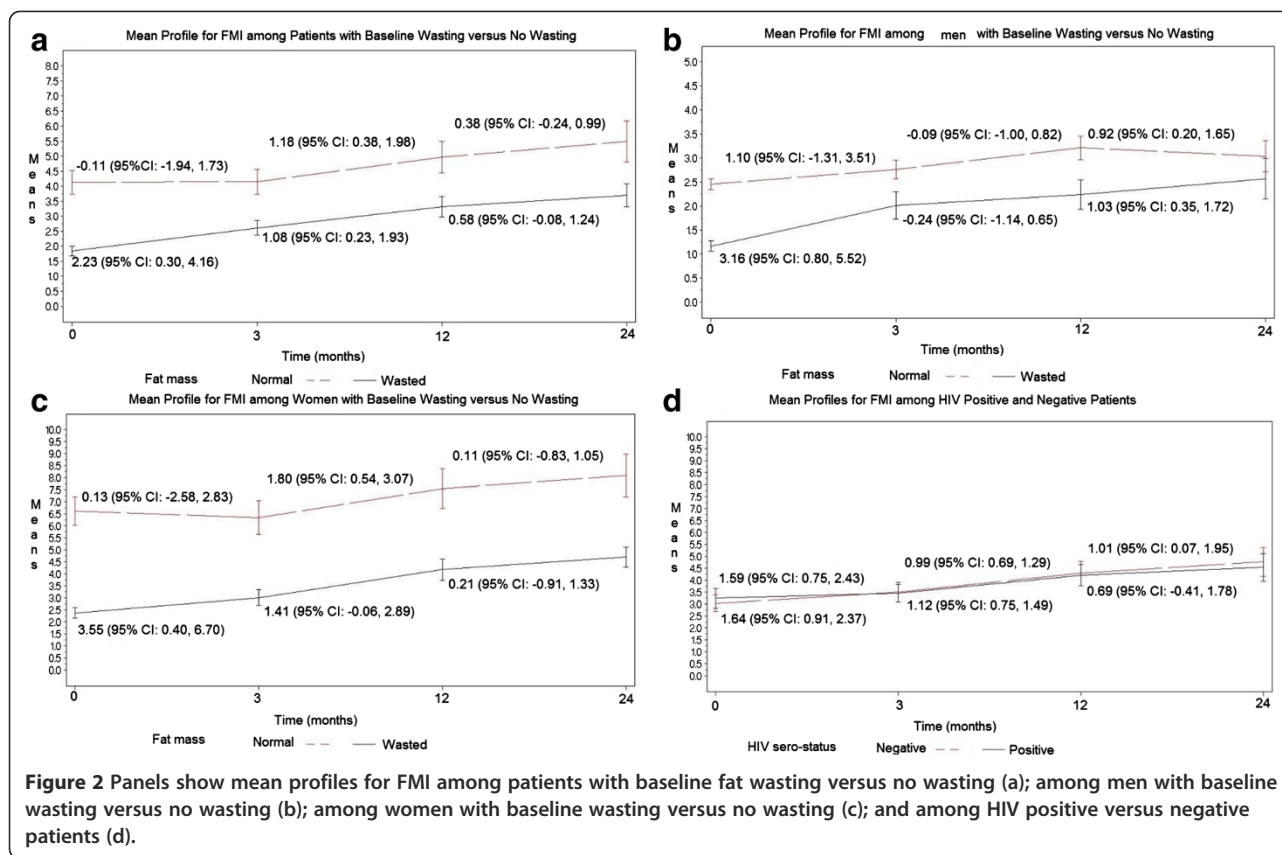
Impact of wasting and gender on rate of mean change in BMI during and after treatment

During the first three months, BMI gain was at the rate of 3.83 (95% CI: 1.67, 5.99) kg/m² per month among patients who presented with wasting compared to the rate of 2.25 (95% CI: 0.33, 4.17) kg/m² per month among patients who presented with no wasting after adjusting for HIV, status of anemia, prior smoking status, history of weight loss, and extent of disease on chest x-ray (Figure 3a; Additional file 1: Table S1). The magnitude in BMI gain among patients who presented with wasting was higher in men at rate of 6.45 (95% CI: 3.02, 9.87) and minimal in women at a rate of 3.30 (95% CI: -0.11, 6.72) (Figure 3b and c; Additional file 1: Table S1 and Additional file 2: Table S2). Similar results were obtained among the 89 participants from the placebo arm of the randomized controlled trial. There were gradual changes in BMI after month 3 and during the one year of follow-up after month 12 in the overall population and in stratified models for women and men (Figure 3b and c; Additional file 1: Table S1 and Additional file 2: Table S2). There were minimal differences in BMI gain between HIV

sero-positive and sero-negative patients over the entire 24 months period (Figure 3d).

Discussion

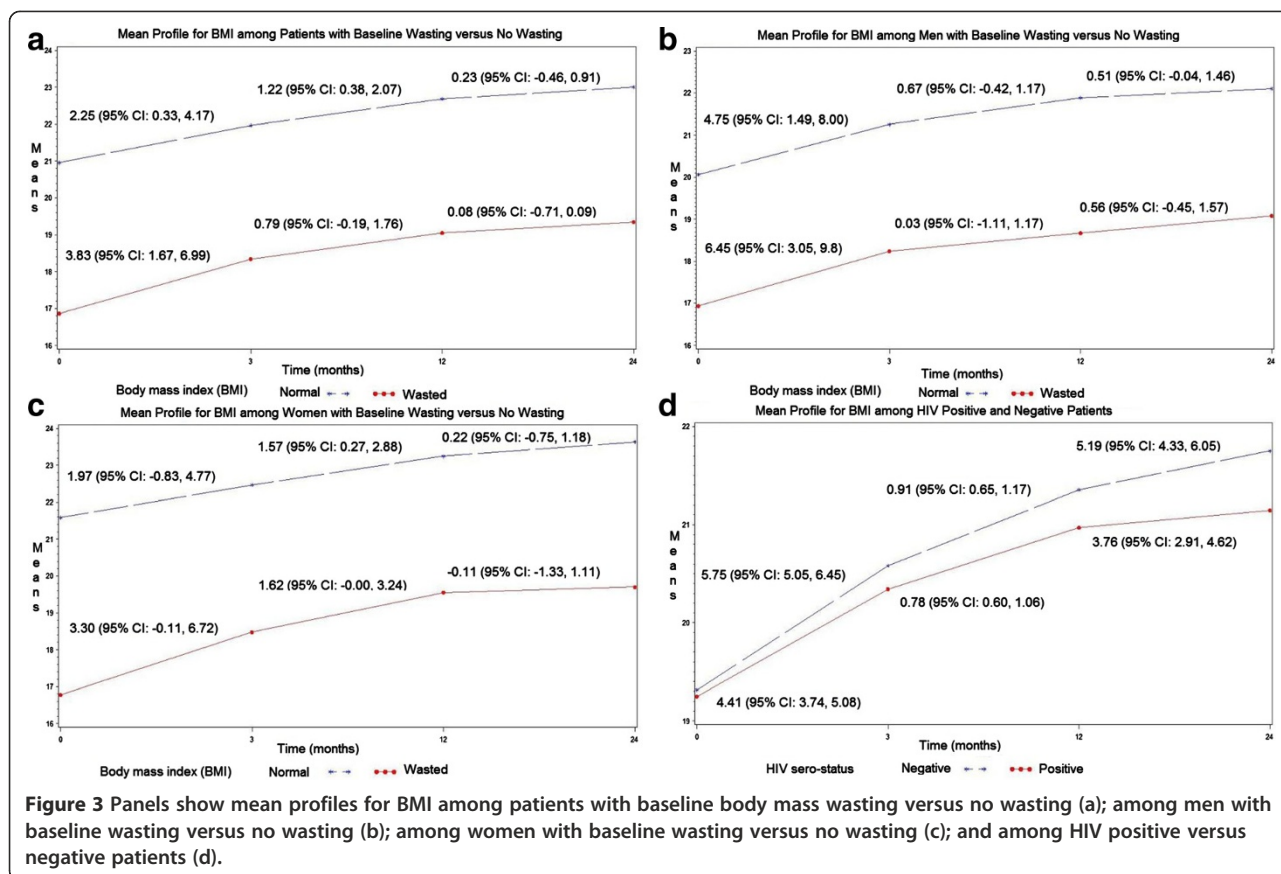
In this prospective cohort study of 717 adults who had BMI measurements and in the subset of 278 of the 717 who had BIA measurements in urban Uganda, body wasting was associated with a dramatic linear gain in BMI and gain in both LMI and FMI in the initial three months of tuberculosis treatment, respectively. The rate of increase varied by gender but not by HIV status of the patient. Men with wasting at baseline regained lean tissue mass at a greater rate than fat tissue mass during initial tuberculosis therapy. In contrast, women with wasting regained fat mass at greater rate than lean tissue mass. Men without wasting regained lean tissue mass without substantial gain in fat mass, whereas women without wasting had minimal changes in lean tissue or fat mass. There were minimal changes in body composition after three months of tuberculosis treatment and during the one year period of follow-up after month 12 among regardless of the initial body composition, gender and HIV status. This suggests that patients remain underweight after 3 months of treatment. Full nutritional recovery takes much longer than treatment itself, and may never fully catch-up in those who at the time of



tuberculosis diagnosis were wasted as previously reported [40]. It is also possible that a substantial proportion of patients with potential to regain in body composition might have died because of marked wasting at time of tuberculosis diagnosis [20-22]. HIV appears to play a marginal role for changes in body composition in co-infected individuals.

This study is the first to report that the initial LMI and BMI influence subsequent changes in body composition among men with tuberculosis. Results of the present study are consistent with previous studies [41] that revealed total lean tissue increased during the first six weeks of tuberculosis treatment and thereafter the increase was in the fat mass compartment. In our present study, there were minimal changes in body composition after month 3 including slight increase, in fat mass among men. The prior study [41]; however, was limited in sample size with only 36 participants because it was a prospective randomized clinical trial. The study population comprised of only patients who were wasted (BMI <18.5 kg/m²), had no HIV comparison group, and followed patients for only 6 months. The strengths of the present study include: large number of study participants comprising both women and men, wasted and not wasted persons, HIV positive and HIV negative individuals, and long duration of follow-up.

The present study demonstrates that patients who presented with reduced fat and lean tissue mass gained in body composition at a higher rate than patients who presented with normal levels of fat and lean tissue mass, particularly during the first three months of tuberculosis treatment. However, the gain was predominantly fat mass among women whereas men gained predominantly lean tissue mass plus substantial levels of fat mass. The potential explanation appears to rest on the gender differences in lean tissue mass content. Women tend to have low lean tissue mass compared to men, yet lean tissue mass has been shown to be a significant determinant of fat oxidation [42,43]. In several reports after adjusting for differences in lean tissue mass, resting fat oxidation is lower in women than men [42,44,45]. Thus, this gender differences in fat metabolism as explained elsewhere [46-48], is associated with lower basal fat oxidation that may contribute to the increased fat storage or gain in women compared to men. Moreover, longitudinal studies have shown that low rates of fat utilization predict subsequent weight [49]. Besides differences in lipolysis, other factors such as differences in hormone action may contribute to differences in fat oxidation. Higher levels of androgens in men stimulate the formation of the nucleic acids essential for protein biosynthesis [50] with eventual increase in lean tissue and recent studies [51] postulate



that major sex hormones such as estrogen and testosterone are central to weight management.

In normal healthy adults, protein catabolism equals protein anabolism; however, protein catabolism exceeds protein anabolism in tuberculosis [52]. In general; however, the linear increase in lean tissue during the first three months among patients who presented with reduced lean tissue mass levels suggest that patients with tuberculosis can mount a protein anabolic response during treatment once bacterial burden is reduced and controlled [5,52]. It may be possible that as the patient becomes sterile from the causative organism during treatment, the degree of body wasting offsets the tuberculosis effect on protein catabolism until a net state of anabolism [53]. Alternatively, the response could be explained by the effective adaptive response of protein metabolism to a chronic inflammatory state [54].

Despite the dramatic linear increase in lean tissue mass, fat mass, and BMI among patients who presented with body wasting, these patients did not normalize their indices for body composition. Wasted patients did not regain body composition comparable to patients presenting without wasting. There may be several explanations for this. It is possible that patients who present with wasting at the time of tuberculosis diagnosis were

of slim body build before disease as compared to the patients who present with normal nutritional status as previously reported that patients with slim body build were at increased risk for tuberculosis [55]. While on tuberculosis treatment, the patients with body wasting apparently regain the original body composition status prior to onset of tuberculosis disease. Following attainment of the original body composition, there are minimal changes in lean tissue and individuals adapt effective energy-sparing mechanisms in balance with the usual energy intake [56,57]. It is also possible that households where tuberculosis occurs in Uganda, and in other countries in the sub-Saharan region, there is food insecurity compromising energy intake. Thus, persistently low body composition may mark lack of access to sufficient calories, protein, and other nutrient intake. It is also possible that tuberculosis causes permanent loss of lean tissue that cannot be regained. The persistently low body composition measures even after effective tuberculosis treatment may be a marker for future health risk. Among patients with wasting who do not normalize, there may be consequences regarding survival and physical function in response to future disease insults. Further research is needed to understand the health risk among these patients.

In this study, we used the BIA method to measure body composition, yet it is not a reference standard like dual-energy x-ray absorptiometry. The BIA prediction method used has not yet been validated in the local population. As a result, findings of body composition may be biased because of variations in hydration across ethnic groups [23]. However, the equations that were used in this study were previously cross validated in individuals of different races (white, black, and Hispanic) among men and women, who were both healthy controls and HIV-infected patients [30]. Moreover, the equations have been used widely in other studies from Africa with meaningful findings [10,12,15,16]. Further, our findings are similar to studies that used state-of-the-art reference methods [58]. We also took care to take measurements at rest, with proper placement of leads, in participants who had not exercised or taken alcohol, in participants with voided bladder and ambient temperature. However, measurements were in patients with underlying illness that may cause shifts in body water compartments, thereby affecting measurements of fat mass. Our findings are also limited by the lack of dietary intake assessment to give further insight in the interpretation of gender differences in longitudinal body composition changes and we did not evaluate HIV disease severity.

Conclusions

Despite limitations of the present study, this study suggests that the body regains weight among wasted tuberculosis patients. Patients with wasting do not recover to the same levels of body mass as those who were not wasted. This suggests that tuberculosis leads to permanent loss of lean tissue and fat mass. There was remarkable gender but not HIV differences in longitudinal body composition changes during the initial phase of tuberculosis treatment among patients who presented with body wasting. The substantial body composition differences between men and women suggest that the nutritional demands during recovery may differ for men and women. Evaluation of nutritional status should involve evaluation of lean tissue and fat mass and further studies should explore the impact of providing nutritional interventions as adjuvant treatment on body composition among tuberculosis patients during and after treatment in sub-Saharan Africa.

Additional files

Additional file 1: Table S1. Impact of lean tissue, fat and body mass wasting on rate of mean change in LMI, FMI and BMI during and after pulmonary tuberculosis treatment in Kampala, Uganda.

Additional file 2: Table S2. Changes in lean tissue mass, fat mass and body mass index during and after tuberculosis treatment among adult patients with or without baseline wasting in Kampala, Uganda.

Abbreviations

HIV: Human immunodeficiency virus; BMI: Body mass index; LMI: Lean tissue mass index; FMI: Fat mass index; BIA: Bioelectrical impedance analysis; CI: Confidence interval; AIDS: Acquired Immunodeficiency syndrome.

Competing interest

The authors declare that they have no competing interests.

Authors' contribution

Authors made the following contributions: EM, DJT, IMP, RM, WHB, HMK, and CCW designed research; EM, LM, SZ, AO, MN, CMS, RM, WHB, HMK, and CCW conducted research and analyzed data; EM, LM, SZ, AO, MN, DJT, IMP, CMS, RM, WHB, HMK, and CCW wrote the paper; and EM, LM, CMS, WHB, and CCW had primary responsibility for final content. All authors read and approved the final manuscript.

Acknowledgements

We would like to acknowledge the invaluable contribution made by the study medical officers, health visitors, laboratory and data personnel: Dr. Lorna Nshuti, Bonnie Thiel, Mark Breda, Dennis Dobbs, Hussein Kisingo, Mary Rutaro, Albert Muganda, Richard Bamuhimbisa, Yusuf Mulumba, Deborah Nsamba, Barbara Kyeyune, Faith Kintu, Dr. Mary Nseroko, Gladys Mpalanyi, Janet Mukose, Grace Tumusiime, Karen Morgan, Dr. Moses Joloba, Dr. Deo Mulindwa, Dr. Brenda Okware, Denise Johnson, Allan Chiunda, Alfred Etwom, and Michael Angel Mugerwa. We acknowledge Prof. Mark Schluchter of Case Western Reserve University for his guidance in statistical analysis of the data. We would like to acknowledge and thank Dr. Francis Adatu Engwau, Head of the Uganda National Tuberculosis and Leprosy Program, for his support of this project. We would like to acknowledge the medical officers, nurses and counselors at the National Tuberculosis Treatment Centre, Mulago Hospital, the Ugandan National Tuberculosis and Leprosy Program and the Uganda Tuberculosis Investigation Bacteriological Unit, Wandegeya, for their contributions to this study.

Funding

This work was supported in part by the AIDS International Training Research Program of the Fogarty International Center [grant number TW00011], and the Tuberculosis Research Unit, awards [N01-AI95383, HHSN266200700022C/N01-AI70022, and AI32414] from the National Institute of Allergy and Infectious Diseases.

Author details

¹Department of Paediatrics & Child Health College of Health Sciences, Makerere University Kampala, Kampala, Uganda. ²Tuberculosis Research Unit, Case Western Reserve University, Cleveland, USA. ³Uganda-Case Western Reserve Research Collaboration, Kampala, Uganda. ⁴Department of Epidemiology & Biostatistics, Case Western Reserve University, Cleveland, USA. ⁵Department of Nutrition, Case Western Reserve University, Cleveland, USA. ⁶Department of Internal Medicine College of Health Sciences, Makerere University, Kampala, Uganda. ⁷Department of Epidemiology & Biostatistics College of Public Health, University of Georgia Athens, Athens, USA.

Received: 19 June 2013 Accepted: 7 January 2014

Published: 13 January 2014

References

1. Kennedy N, Ramsay A, Uiso L, Gutmann J, Ngowi FI, et al: **Nutritional status and weight gain in patients with pulmonary tuberculosis in Tanzania.** *Trans R Soc Trop Med Hyg* 1996, **90**:162–166.
2. Harries AD, Nkhoma WA, Thompson PJ, Nyangulu DS, Wirima JJ: **Nutritional status in Malawian patients with pulmonary tuberculosis and response to chemotherapy.** *Eur J Clin Nutr* 1988, **42**:445–450.
3. Zachariah R, Spielmann MP, Harries AD, Salaniponi FM: **Moderate to severe malnutrition in patients with tuberculosis is a risk factor associated with early death.** *Trans R Soc Trop Med Hyg* 2002, **96**:291–294.
4. Paton NI, Castello-Branco LR, Jennings G, Ortigao-de-Sampaio MB, Elia M, et al: **Impact of tuberculosis on the body composition of HIV-infected men in Brazil.** *J Acquir Immune Defic Syndr Hum Retroviral* 1999, **20**:265–271.
5. Paton NI, Ng YM, Chee CB, Persaud C, Jackson AA: **Effects of tuberculosis and HIV infection on whole-body protein metabolism**

- during feeding, measured by the [15 N]glycine method. *Am J Clin Nutr* 2003, **78**:319–325.
6. Macallan DC: **Malnutrition in tuberculosis.** *Diagn Microbiol Infect Dis* 1999, **34**:153–157.
 7. (1998) Chemotherapy and management of tuberculosis in the United Kingdom: recommendations: **Joint Tuberculosis Committee of the British Thoracic Society.** *Thorax* 1998, **53**:536–548.
 8. Onwubalili JK: **Malnutrition among tuberculosis patients in Harrow, England.** *Eur J Clin Nutr* 1988, **42**:363–366.
 9. Lucas SB, De Cock KM, Houmou A, Peacock C, Diomande M, et al: **Contribution of tuberculosis to slim disease in Africa.** *BMJ* 1994, **308**:1531–1533.
 10. Shah S, Whalen C, Kotler DP, Mayanja H, Namale A, et al: **Severity of human immunodeficiency virus infection is associated with decreased phase angle, fat mass and body cell mass in adults with pulmonary tuberculosis infection in Uganda.** *J Nutr* 2001, **131**:2843–2847.
 11. Niyongabo T, Henzel D, Idi M, Nimubona S, Gikoro E, et al: **Tuberculosis, human immunodeficiency virus infection, and malnutrition in Burundi.** *Nutrition* 1999, **15**:289–293.
 12. Mupere E, Zalwango S, Chiunda A, Okwera A, Mugerwa R, et al: **Body composition among HIV-seropositive and HIV-seronegative adult patients with pulmonary tuberculosis in Uganda.** *Ann Epidemiol* 2010, **20**:210–216.
 13. Paton NI, Ng YM: **Body composition studies in patients with wasting associated with tuberculosis.** *Nutrition* 2006, **22**:245–251.
 14. van Lettow M, Fawzi WW, Semba RD: **Triple trouble: the role of malnutrition in tuberculosis and human immunodeficiency virus co-infection.** *Nutr Rev* 2003, **61**:81–90.
 15. Van Lettow M, Kumwenda JJ, Harries AD, Whalen CC, Taha TE, et al: **Malnutrition and the severity of lung disease in adults with pulmonary tuberculosis in Malawi.** *Int J Tuberc Lung Dis* 2004, **8**:211–217.
 16. Villamor E, Saathoff E, Mugusi F, Bosch RJ, Urassa W, et al: **Wasting and body composition of adults with pulmonary tuberculosis in relation to HIV-1 coinfection, socioeconomic status, and severity of tuberculosis.** *Eur J Clin Nutr* 2006, **60**:163–171.
 17. Ramakrishnan CV, Rajendran K, Jacob PG, Fox W, Radhakrishna S: **The role of diet in the treatment of pulmonary tuberculosis. An evaluation in a controlled chemotherapy study in home and sanatorium patients in South India.** *Bull World Health Organ* 1961, **25**:339–359.
 18. Vanitallie TB, Yang MU, Heymsfield SB, Funk RC, Boileau RA: **Height-normalized indices of the body's fat-free mass and fat mass: potentially useful indicators of nutritional status.** *Am J Clin Nutr* 1990, **52**:953–959.
 19. Kyle UG, Piccoli A, Pichard C: **Body composition measurements: interpretation finally made easy for clinical use.** *Curr Opin Clin Nutr Metab Care* 2003, **6**:387–393.
 20. Wagner GJ, Ferrando SJ, Rabkin JG: **Psychological and physical health correlates of body cell mass depletion among HIV + men.** *J Psychosom Res* 2000, **49**:55–57.
 21. Mostert R, Goris A, Weling-Scheepers C, Wouters EF, Schols AM: **Tissue depletion and health related quality of life in patients with chronic obstructive pulmonary disease.** *Respir Med* 2000, **94**:859–867.
 22. Mupere E, Malone L, Zalwango S, Chiunda A, Okwera A, et al: **Lean tissue mass wasting is associated with increased risk of mortality among women with pulmonary tuberculosis in urban Uganda.** *Ann Epidemiol* 2012, **22**:466–473.
 23. Kyle UG, Bosaeus I, De Lorenzo AD, Deurenberg P, Elia M, et al: **Bioelectrical impedance analysis-part II: utilization in clinical practice.** *Clin Nutr* 2004, **23**:1430–1453.
 24. Kyle UG, Genton L, Pichard C: **Body composition: what's new?** *Curr Opin Clin Nutr Metab Care* 2002, **5**:427–433.
 25. Guwatudde D, Nakakeeto M, Jones-Lopez EC, Maganda A, Chiunda A, et al: **Tuberculosis in household contacts of infectious cases in Kampala, Uganda.** *Am J Epidemiol* 2003, **158**:887–898.
 26. Stein CM, Nshuti L, Chiunda AB, Boom WH, Elston RC, et al: **Evidence for a major gene influence on tumor necrosis factor-alpha expression in tuberculosis: path and segregation analysis.** *Hum Hered* 2005, **60**:109–118.
 27. Whalen CC, Zalwango S, Chiunda A, Malone L, Eisenach K, et al: **Secondary attack rate of tuberculosis in urban households in Kampala, Uganda.** *PLoS One* 2011, **6**:e16137.
 28. Mayanja-Kizza H, Jones-Lopez E, Okwera A, Wallis RS, Ellner JJ, et al: **Immuno-adjunct prednisolone therapy for HIV-associated tuberculosis: a phase 2 clinical trial in Uganda.** *J Infect Dis* 2005, **191**:856–865.
 29. Jackson AS, Pollock ML, Graves JE, Mahar MT: **Reliability and validity of bioelectrical impedance in determining body composition.** *J Appl Physiol* 1988, **64**:529–534.
 30. Kotler DP, Burastero S, Wang J, Pierson RN Jr: **Prediction of body cell mass, fat-free mass, and total body water with bioelectrical impedance analysis: effects of race, sex, and disease.** *Am J Clin Nutr* 1996, **64**:489S–497S.
 31. Schutz Y, Kyle UU, Pichard C: **Fat-free mass index and fat mass index percentiles in Caucasians aged 18–98 y.** *Int J Obes Relat Metab Disord* 2002, **26**:953–960.
 32. World Health Organization: **Physical status: the use and interpretation of anthropometry. Report of a WHO Expert Committee.** *World Health Organ Tech Rep Ser* 1995, **854**:1–452. Geneva. 1–452 p.
 33. Laird NM, Ware JH: **Random-effects models for longitudinal data.** *Biometrics* 1982, **38**:963–974.
 34. Singer JD, Willett JB: **Applied longitudinal data analysis: modeling change and event occurrence.** Oxford New York: Oxford University Press; 2003.
 35. Bryk AS, Raudenbush SW: **Hierarchical linear models: applications and data analysis methods.** Thousand Oaks, CA: Sage; 2002.
 36. Naumova EN, Must A, Laird NM: **Tutorial in biostatistics: evaluating the impact of 'critical periods' in longitudinal studies of growth using piecewise mixed effects models.** *Int J Epidemiol* 2001, **30**:1332–1341.
 37. Oberg AL, Mahoney DW: **Linear mixed effects models.** *Methods Mol Biol* 2007, **404**:213–234.
 38. Ridout MS: **Testing for random dropouts in repeated measurement data.** *Biometrics* 1991, **47**:1617–1619. discussion 1619–1621.
 39. SAS Institute The Mixed Procedure: **SAS/STAT User's Guide, Version 9.13.** Cary, NC: SAS Institute; 2004.
 40. Schwenk A, Macallan DC: **Tuberculosis, malnutrition and wasting.** *Curr Opin Clin Nutr Metab Care* 2000, **3**:285–291.
 41. Paton NI, Chua YK, Earnest A, Chee CB: **Randomized controlled trial of nutritional supplementation in patients with newly diagnosed tuberculosis and wasting.** *Am J Clin Nutr* 2004, **80**:460–465.
 42. Nagy TR, Goran MI, Weinsier RL, Toth MJ, Schutz Y, et al: **Determinants of basal fat oxidation in healthy Caucasians.** *J Appl Physiol* 1996, **80**:1743–1748.
 43. Toth MJ, Arciero PJ, Gardner AW, Calles-Escandon J, Poehlman ET: **Rates of free fatty acid appearance and fat oxidation in healthy younger and older men.** *J Appl Physiol* 1996, **80**:506–511.
 44. Horton TJ, Pagliassotti MJ, Hobbs K, Hill JO: **Fuel metabolism in men and women during and after long-duration exercise.** *J Appl Physiol* 1998, **85**:1823–1832.
 45. Toth MJ, Gardner AW, Arciero PJ, Calles-Escandon J, Poehlman ET: **Gender differences in fat oxidation and sympathetic nervous system activity at rest and during submaximal exercise in older individuals.** *Clin Sci (Lond)* 1998, **95**:59–66.
 46. Conway JM: **Ethnicity and energy stores.** *Am J Clin Nutr* 1995, **62**:1067S–1071S.
 47. Casazza K, Hanks LJ, Beasley TM, Fernandez JR: **Beyond thriftiness: independent and interactive effects of genetic and dietary factors on variations in fat deposition and distribution across populations.** *Am J Phys Anthropol* 2011, **145**:181–191.
 48. Blaak E: **Gender differences in fat metabolism.** *Curr Opin Clin Nutr Metab Care* 2001, **4**:499–502.
 49. Zurlo F, Lillioja S, Esposito-Del Puente A, Nyomba BL, Raz I, et al: **Low ratio of fat to carbohydrate oxidation as predictor of weight gain: study of 24-h RQ.** *Am J Physiol* 1990, **259**:E650–E657.
 50. Mooradian AD, Morley JE, Korenman SG: **Biological actions of androgens.** *Endocr Rev* 1987, **8**:1–28.
 51. Kruger A, Wissing MP, Towers GW, Doak CM: **Sex differences independent of other psycho-sociodemographic factors as a predictor of body mass index in black South African adults.** *J Health Popul Nutr* 2012, **30**:56–65.
 52. Macallan DC, McNurlan MA, Kurpad AV, de Souza G, Shetty PS, et al: **Whole body protein metabolism in human pulmonary tuberculosis and undernutrition: evidence for anabolic block in tuberculosis.** *Clin Sci (Lond)* 1998, **94**:321–331.
 53. Tomkins AM, Garlick PJ, Schofield WN, Waterlow JC: **The combined effects of infection and malnutrition on protein metabolism in children.** *Clin Sci (Lond)* 1983, **65**:313–324.
 54. Paton NI, Angus B, Chaowagul W, Simpson AJ, Suputtamongkol Y, et al: **Protein and energy metabolism in chronic bacterial infection: studies in melioidosis.** *Clin Sci (Lond)* 2001, **100**:101–110.

55. Edwards LB, Livesay VT, Acquaviva FA, Palmer CE: **Height, weight, tuberculous infection, and tuberculous disease.** *Arch Environ Health* 1971, **22**:106–112.
56. Kurpad AV, Muthayya S, Vaz M: **Consequences of inadequate food energy and negative energy balance in humans.** *Public Health Nutr* 2005, **8**:1053–1076.
57. Ferro-Luzzi A, Petracchi C, Kuriyan R, Kurpad AV: **Basal metabolism of weight-stable chronically undernourished men and women: lack of metabolic adaptation and ethnic differences.** *Am J Clin Nutr* 1997, **66**:1086–1093.
58. Schwenk A, Hodgson L, Wright A, Ward LC, Rayner CF, *et al*: **Nutrient partitioning during treatment of tuberculosis: gain in body fat mass but not in protein mass.** *Am J Clin Nutr* 2004, **79**:1006–1012.

doi:10.1186/1471-2334-14-24

Cite this article as: Mupere *et al*: Wasting among Uganda men with pulmonary tuberculosis is associated with linear regain in lean tissue mass during and after treatment in contrast to women with wasting who regain fat tissue mass: prospective cohort study. *BMC Infectious Diseases* 2014 **14**:24.

**Submit your next manuscript to BioMed Central
and take full advantage of:**

- Convenient online submission
- Thorough peer review
- No space constraints or color figure charges
- Immediate publication on acceptance
- Inclusion in PubMed, CAS, Scopus and Google Scholar
- Research which is freely available for redistribution

Submit your manuscript at
www.biomedcentral.com/submit

